



# Warsash Sailing Club

## Notice Of Race

---

### RS200 EaSEA Tour, RS400 Summer Championships and RS600 National Tour

Organising authority

#### WARSASH SAILING CLUB (WSC)

In conjunction with

#### RS200, RS400 & RS600 Class Associations

6th-7th June 2026

Warsash, United Kingdom

## NOTICE OF RACE

The notation '[NP]' in a rule means that a boat may not protest another boat for breaking that rule. This changes RRS 60.1. The notation '[DP]' in a rule of the NOR or SI means that the penalty for breaching the rule is at the discretion of the protest committee and may be less than disqualification.

### 1 RULES

- 1.1 The event is governed by the rules as defined in The Racing Rules of Sailing (RRS).
- 1.2 RRS Appendix T applies.
- 1.3 [NP] Warsash Sailing Club implements the RYA Racing Charter available at <https://www.rya.org.uk/racing/rules/racing-charter>. Competitors shall undertake to sail in compliance with the charters.
- 1.4 [DP] Entrants and authorised guests are temporary members of WSC during the period of the event and shall, always, comply with the Club rules and bylaws. Failure to observe the rules may result in exclusion from WSC premises.
- 1.5 RRS 40.1 always applies while afloat.

### 2 SAILING INSTRUCTIONS

- 2.1 The sailing instructions will be published on the Warsash Sailing Club website and the RS200, RS400 & RS600 websites by 17:00 on Wednesday 3rd June.

### 3 COMMUNICATION

- 3.1 The official notice board is in Shore House club house.
- 3.2 [DP] While racing (from the first warning signal until the end of the last race of the day), except in an emergency, a boat shall not make voice or data transmissions and shall not receive voice or data communication that is not available to all boats.



- 3.3 Competitors should note that it is anticipated that all communication for this event will be online and that the WSC Wi-Fi system may not be accessible. Competitors are advised that they may wish to have a device which can connect to the internet via an alternative means.

### 4 ELIGIBILITY AND ENTRY

- 4.1 The regatta is open to all boats of the RS200, RS400 & RS600 classes.
- 4.2 Eligible boats shall enter by completing the online entry form accessed via the WSC website (<https://warsashsc.org.uk/open-meetings/rs200-rs400-rs600/>) paying the entry fee completing registration by midnight on 2nd June 2026.
- 4.3 Late entries may be accepted at the discretion of the Organising Authority at an increased entry rate.
- 4.4 The provisional entry limits are 30 x RS200, 30 x RS400, 10 x RS600.
- 4.5 Parent/Guardian Declarations: All helms and crews under 18 years of age during the event shall submit signed Parent/Guardian Declarations on-line as part of the entry process and submit details of the parent acting in charge of a child who shall be present at WSC at all times during the event.
- 4.6 Medical forms and sailor declarations included as part of the on-line entry are required to be completed for all competitors.

### 5 FEES

- 5.1 Entry fees are as follows:

Class	Early Entry Fee until 19th May	Standard Fee
RS200	£55	£70
RS400	£55	£70
RS600	£45	£60

### 6 IDENTIFICATION & ADVERTISING

- 6.1 [NP] [DP] When provided by the Organising Authority, boats shall display bow numbers, trolley tags and/or advertising.

### 7 EVENT SERIES

- 7.1 The regatta will consist of a single series.
- 7.2 The regatta may form part of a further series, details of which can be found on the Class Association website.



### 8 SCHEDULE

- 8.1 Competitors and support boat crews are required to register in Shore House prior to racing on Saturday 6th June 2026.
- 8.2 Competitor Briefing: The event briefing will take place in the garden at Shore House. Any relevant notices will be posted on the event Notice Board as defined in the Sailing Instructions. The briefing on Saturday will take place at 10:30. The briefing on Sunday will take place at 09:00.
- 8.3 Format of Racing: It is intended to run 6 races over the two days. The intended format is as follows; this may be varied:

Day	First Warning Signal	Intended no. of races
Saturday 6th June 2026	12:25hrs	3 races back-to-back
Sunday 7th June 2026	10:25hrs	3 races back-to-back

- 8.4 On the last scheduled day of racing no warning signal will be made after 15:00.

### 9 EQUIPMENT INSPECTION

- 9.1 A boat shall produce a valid measurement certificate if requested by the Class association. This may be in electronic format.
- 9.2 [NP][DP] **Towline:** each boat shall carry a floating towline of at least 8mm diameter and 10 metres length. This must be accessible without breaching the integral buoyancy of the dinghy and must not have any attachments such as shackles or knots.
- 9.4. [DP] Boats, sails and equipment may be inspected for class rules compliance prior to or during or after racing.

### 10 VENUE

- 10.1 The venue will be Warsash Sailing Club, Shore Road, Warsash SO31 9FS.
- 10.2 NoR Addendum 1 shows the plan of the event venue.
- 10.3 NoR Addendum 2 shows the location of the racing areas.
- 10.4 The race area will be within Southampton Water/The Solent up to 2 miles from WSC in the vicinity of Solent Breezes to the East of the North channel. Boats are not expected to return ashore between races.

### 11 COURSES

- 11.1 The Course(s) to be sailed will be detailed in the SIs.

### 12 PENALTY SYSTEM

- 12.1 The penalty system will be described in the SIs.



### **13 SCORING**

- 13.1 1 race is required to be completed to constitute a series.
- 13.2 (a) When fewer than 4 races have been completed a boat's series score shall be the total of her race scores.  
(b) When 4 or more races have been completed, a boats series score will be the total of her race score excluding her worst score.

### **14 SUPPORT PERSON VESSELS**

- 14.1 Support person vessels will be allowed and will be expected to act as part of the safety fleet if requested to do so by the Race Committee.
- 14.2 Official, patrol and support person vessels must be registered with WSC prior to the start of the first race and may be required to be marked with an appropriate coloured flag and shall comply with instructions from the event safety officer.
- 14.3 [DP] Team leaders, coaches and other support personnel including relatives of competitors who are not official, patrol or support person vessels shall not be in the racing area, nor shall they communicate with any competitors, from the time of the preparatory signal for the first race until the last boat returns to shore. The penalty for failing to comply with this requirement will be at the discretion of the protest committee and may be less than disqualification for all boats associated with the support personnel who do so.
  - a) For the purposes of this rule, the racing area shall be defined as not less than 300m from any boat that is racing, and this shall specifically include an area not less than 200m immediately to leeward of the finish line for any race.
  - b) For events that are held in restricted waters where the requirements in 14.3 a) are unable to be met, the Race Officer may designate a specific area for team leaders, coaches, or support boats
- 14.4 Competitors will not be able to place food, drink, and spares on any support vessels.

### **15 BERTHING**

- 15.1 [DP] Boats shall be kept in their assigned places in the Strawberry Fields or Club dinghy park for the duration of the regatta unless instructed otherwise.

### **16 DISTINGUISHING NUMBERS**

- 16.1 Under exceptional circumstances, the Race Committee may permit a boat to use sails carrying a distinguishing number other than that required by RRS 77 and RRS Appendix G. Such permission is only valid if sought in writing before proceeding afloat.

### **17 DATA PROTECTION**

- 17.1 **PRIVACY STATEMENT** The personal information you provide to the organising authority will be used to facilitate your participation in the event. If you have agreed to be bound by the Racing Rules of Sailing and the other rules that govern the event



(the rules), the legal basis for processing that personal information is contract. If you are not bound by the rules, the legal basis for processing that personal information is legitimate interest. Your personal information will be stored and used in accordance with the Warsash Sailing Club's privacy policy. When required by the rules, personal information may be shared with the RYA and/or World Sailing. The results of the event and the outcome of any hearing or appeal may be published.

### **18 RIGHT TO USE NAMES AND LIKENESS**

- 18.1 Competitors automatically grant to Warsash Sailing Club, the RS Class Association, and their sponsors without payment the right in perpetuity to make, use and show any motion pictures, still pictures and live, taped, or filmed television of or relating to the event.

### **19 RISK STATEMENT**

- 19.1 Rule 3 of the Racing Rules of Sailing states: 'The responsibility for a boat's decision to participate in a race or to continue racing is hers alone.'

Sailing is by its nature an unpredictable sport and therefore inherently involves an element of risk. By taking part in the event, each competitor agrees and acknowledges that:

- (a) They are aware of the inherent element of risk involved in the sport and accept responsibility for the exposure of themselves, their crew and their boat to such inherent risk whilst taking part in the event;
- (b) They are responsible for the safety of themselves, their crew, their boat and their other property whether afloat or ashore;
- (c) They accept responsibility for any injury, damage or loss to the extent caused by their own actions or omissions;
- (d) Their boat is in good order, equipped to sail in the event and they are fit to participate;
- (e) The provision of a race management team, patrol boats and other officials and volunteers by the event organizer does not relieve them of their own responsibilities;
- (f) The provision of patrol boat cover is limited to such assistance, particularly in extreme weather conditions, as can be practically provided in the circumstances;
- (g) It is their responsibility to familiarise themselves with any risks specific to this venue or this event drawn to their attention in any rules and information produced for the venue or event and to attend any safety briefing held for the event: In particular:
  - Tidal conditions which are complex with fast tidal flows in the river and shallows along the river and north shore at mid and low water.



# Warsash Sailing Club

## Notice Of Race

---

- The area is used by a wide variety of craft, including large commercial vessels restricted in their ability to manoeuvre using the main Southampton Water shipping channel.
- In the river leisure craft are constrained to a narrow channel and do not always anticipate the manoeuvres of dinghies whether sailing in the river or around launching and recovery.
- The Convention on the International Regulations for Preventing Collisions at Sea (COLREG) 1972 and local byelaws apply to all craft including dinghies.

### **20 INSURANCE**

- 20.1 Each participating boat shall be insured with valid third-party liability insurance with a minimum cover of £3,000,000 per incident or the equivalent.

### **21 PRIZES**

- 21.1 Prizes will be awarded depending on entry numbers.

### **22 FURTHER INFORMATION**

For further information please contact

**Admin, Warsash Sailing Club, Shore Road, Warsash, Southampton, SO31 9FS.**

**Phone 01489 583575 (0930 – 1500 Weekdays).**

**Email: [admin@warsashsc.org.uk](mailto:admin@warsashsc.org.uk).**

**Web: [www.warsashsc.org.uk](http://www.warsashsc.org.uk)**



# Warsash Sailing Club

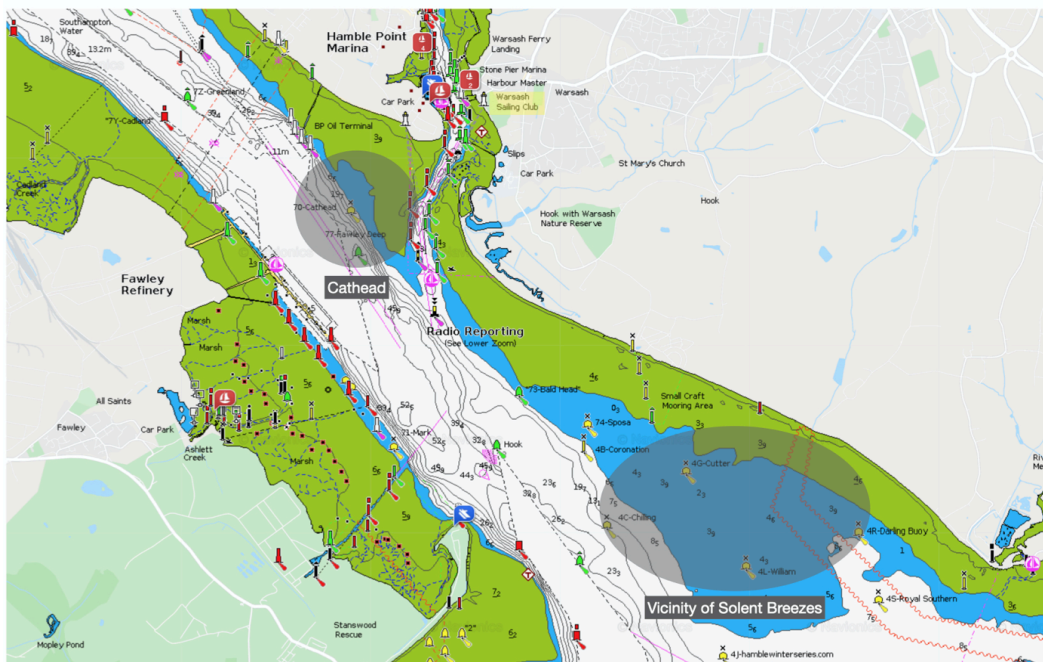
## Notice Of Race

### Addendum 1 - Site Plan



### Addendum 2 - Racing Area

The main race area is in the vicinity of Solent Breezes.



Warsash Sailing Club

Shore House, Shore Road, Warsash, Southampton, SO31 9FS, UK

Tel: 01489 583575 Email: [admin@warsashsc.org.uk](mailto:admin@warsashsc.org.uk) Web: [warsashsc.org.uk](http://warsashsc.org.uk)