



RS Aero Southern Championships

Organising authority

WARSASH SAILING CLUB (WSC)

In conjunction with

RS Aero UK Class Association

Saturday 1st July & Sunday 2nd July 2023

Warsash, United Kingdom

NOTICE OF RACE

The notation '[NP]' in a rule means that a boat may not protest another boat for breaking that rule. This changes RRS 60.1 (a). The notation '[DP]' in a rule of the NOR or SI means that the penalty for breaching the rule is at the discretion of the protest committee and may be less than disqualification.

1 RULES

- 1.1 The event is governed by the rules as defined in The Racing Rules of Sailing (RRS).
- 1.2 RRS Appendix T is replaced with the RYA rules dispute procedure
- 1.3 [NP] Warsash Sailing Club implements the RYA Racing Charter available at <https://www.rya.org.uk/racing/rules/racing-charter>. Competitors shall undertake to sail in compliance with the charters.
- 1.4 [DP] Entrants and authorised guests are temporary members of WSC during the period of the event and shall, always, comply with the Club rules and bylaws. Failure to observe the rules may result in exclusion from WSC premises.
- 1.5 RRS 40.1 always applies while afloat.
- 1.6 Rule 35 changed to score boats finishing outside the time limit in their observed position on the course.

2 SAILING INSTRUCTIONS

- 2.1 The sailing instructions will be published online by 17:00 on Wednesday 28th June 2023.

3 COMMUNICATION

- 3.1 The online official notice board is in Shorehouse club house.
- 3.2 [DP] While racing (from the first warning signal until the end of the last race of the day), except in an emergency, a boat shall not make voice or data transmissions and shall not receive voice or data communication that is not available to all boats.



4 ELIGIBILITY AND ENTRY

- 4.1 The regatta is open to all RS Aero class dinghies. RS Aero Class Rules for membership to be eligible to compete in the event shall apply.
- 4.2 Eligible boats shall enter by completing the online entry form accessed via the RS Aero Class Association website, completing registration by midnight on 29th June 2023.
- 4.3 No late entries will be accepted
- 4.4 Parent/Guardian Declarations: All competitors aged under 18yrs shall complete an Under 18s consent form. This can be downloaded from the 'Document' area of the RS Aero UK Class Association website and shall be completed and submitted at registration. Parents acting in charge of a child shall be present at WSC at all times during the event.
- 4.5 Medical forms and sailor declarations may be required to be completed for all competitors at registration.

5 FEES

- 5.1 The Entry Fee for the event is £55 that includes free weekend parking in Strawberry Field.

6 IDENTIFICATION & ADVERTISING

- 6.1 [NP] [DP] When provided by the Organising Authority, boats shall display bow numbers and/or advertising.

7 EVENT SERIES

- 7.1 The regatta will consist of a single series.
- 7.2 Racing will be held in separate fleets for RS Aero 5, RS Aero 6, RS Aero 7 and RS Aero 9 rig options. Boats may enter without specifying their rig, but shall do so at event registration. A competitor may not change rigs during the event.

8 SCHEDULE

- 8.1 Competitors and support boat crews are required to register in Shore House prior to racing from 09:00 on Saturday 1st July 2023.
- 8.2 There will be a competitor briefing at 10:30 on Saturday 1st July and 09:00 on Sunday 2nd July.
- 8.3 Format of Racing: It is intended to run 6 races over the two days. The intended format is as follows; this may be varied:



Notice Of Race

Day	First Warning Signal	Intended no. of races
Saturday 1 st July 2023	12:30hrs	3 races back-to-back
Sunday 2 nd July 2023	10:25hrs	3 races back-to-back

8.4 On the last scheduled day of racing no warning signal will be made after 15:00.

9 EQUIPMENT INSPECTION

- 9.1 Towline: Each boat shall carry a floating towline of at least 8mm diameter and 10 metres length. This must be accessible without breaching the integral buoyancy of the dinghy and must not have any attachments such as shackles or knots. Towlines for non WSC members will be provided by the event sponsor.
- 9.2 [DP] Boats, sails and equipment may be inspected for class rules compliance prior to or during or after racing.

10 VENUE

- 10.1 The venue will be Warsash Sailing Club, Shore Road, Warsash SO31 9FS.
- 10.2 NoR Addendum 1 shows the plan of the event venue.
- 10.3 NoR Addendum 2 shows the location of the racing areas.
- 10.4 The race area will be within Southampton Water/The Solent up to 2 miles from WSC in the vicinity of Solent Breezes to the East of the North channel. Boats are not expected to return ashore between races.

11 COURSES

- 11.1 The Course(s) to be sailed will be a detailed in the SIs.

12 PENALTY SYSTEM

- 12.1 The penalty system will be described in the SIs.

13 SCORING

- 13.1 One race is required to be completed to constitute a series.
- 13.2 (a) When fewer than 4 races have been completed a boat's series score shall be the total of her race scores.
- (b) When 4 or more races have been completed, a boats series score will be the total of her race score excluding her worst score.

14 SUPPORT PERSON VESSELS

- 14.1 Support person vessels will be allowed and will be expected to act as part of the safety fleet if requested to do so by the Race Committee.



Notice Of Race

- 14.2 Official, patrol and support person vessels must be registered with WSC prior to the start of the first race and may be required to be marked with an appropriate coloured flag and shall comply with instructions from the event safety officer.
- 14.3 [DP] Team leaders, coaches and other support personnel including relatives of competitors who are not official, patrol or support person vessels shall not be in the racing area, nor shall they communicate with any competitors, from the time of the preparatory signal for the first race until the last boat returns to shore. The penalty for failing to comply with this requirement will be at the discretion of the protest committee and may be less than disqualification for all boats associated with the support personnel who do so.
- a) For the purposes of this rule, the racing area shall be defined as not less than 300m from any boat that is racing, and this shall specifically include an area not less than 200m immediately to leeward of the finish line for any race.
- b) For events that are held in restricted waters where the requirements in 14.3 a) are unable to be met, the Race Officer may designate a specific area for team leaders, coaches, or support boats
- 14.4 Competitors will not be able to place food, drink, and spares on any support vessels.

15 BERTHING

- 15.1 [DP] Boats shall be kept in their assigned places in the Strawberry Fields or Club dinghy park for the duration of the regatta unless instructed otherwise.

16 DISTINGUISHING NUMBERS

- 16.1 Under exceptional circumstances, the Race Committee may permit a boat to use sails carrying a distinguishing number other than that required by RRS 77 and RRS Appendix G. Such permission is only valid if sought in writing before proceeding afloat.

17 DATA PROTECTION

- 17.1 PRIVACY STATEMENT The personal information you provide to the organising authority will be used to facilitate your participation in the event. If you have agreed to be bound by the Racing Rules of Sailing and the other rules that govern the event (the rules), the legal basis for processing that personal information is contract. If you are not bound by the rules, the legal basis for processing that personal information is legitimate interest. Your personal information will be stored and used in accordance with the Warsash Sailing Club's privacy policy. When required by the rules, personal information may be shared with the RYA and/or World Sailing. The results of the event and the outcome of any hearing or appeal may be published.

18 RIGHT TO USE NAMES AND LIKENESS

- 18.1 Competitors automatically grant to Warsash Sailing Club, the Class Association, and their sponsors without payment the right in perpetuity to make, use and show any motion pictures, still pictures and live, taped, or filmed television of or relating to the event.



19 RISK STATEMENT

- 19.1 RRS 3 states: "The responsibility for a boat's decision to participate in a race or to continue racing is hers alone." By participating in this event each competitor agrees and acknowledges that sailing is a potentially dangerous activity with inherent risks. These risks include strong winds and rough seas, sudden changes in weather, failure of equipment, boat handling errors, poor seamanship by other boats, loss of balance on an unstable platform and fatigue resulting in increased risk of injury. Inherent in the sport of sailing is the risk of permanent, catastrophic injury or death by drowning, trauma, hypothermia of other causes. By taking part in the event, each competitor agrees and acknowledges that:
- (a) they are aware of the inherent element of risk involved in the sport and accept responsibility for the exposure of themselves, their crew and their boat to such inherent risk whilst taking part in the event;
 - (b) they are responsible for the safety of themselves, their crew, their boat, and their other property whether afloat or ashore;
 - (c) they accept responsibility for any injury, damage or loss to the extent caused by their own actions or omissions;
 - (d) their boat is in good order, equipped to sail in the event and they are fit to participate;
 - (e) the provision of a race management team, patrol boats and other officials and volunteers by the event organiser does not relieve them of their own responsibilities;
 - (f) the provision of patrol boat cover is limited to such assistance, particularly in extreme weather conditions, as can be practically provided in the circumstances;
 - (g) it is their responsibility to familiarise themselves with any risks specific to this venue or this event drawn to their attention in any rules and information produced for the venue or event and to attend any competitors briefing held for the event.

20 INSURANCE

- 20.1 Each participating boat shall be insured with valid third-party liability insurance with a minimum cover of £3,000,000 per incident or the equivalent.

21 PRIZES

- 21.1 Prizes will be awarded depending on entry numbers.



FURTHER INFORMATION

Breakfast will be available from 08:00 both Saturday and Sunday mornings.

The bar will be open after racing on Saturday.

A Saturday evening meal at Shore House may be ordered and paid for at registration on Saturday morning.

Parking: Competitors cars may be parked in the Strawberry Field adjacent to the club, free of charge and part of the entry fee. Parking is available in the foreshore public car parks that are pay and display.

For further information please contact:

Admin, Warsash Sailing Club, Shore Road, Warsash, Southampton, SO31 9FS.

Phone 01489 583575 (0930 – 1500 Weekdays).

Email: admin@warsashsc.org.uk.

Web: www.warsashsc.org.uk



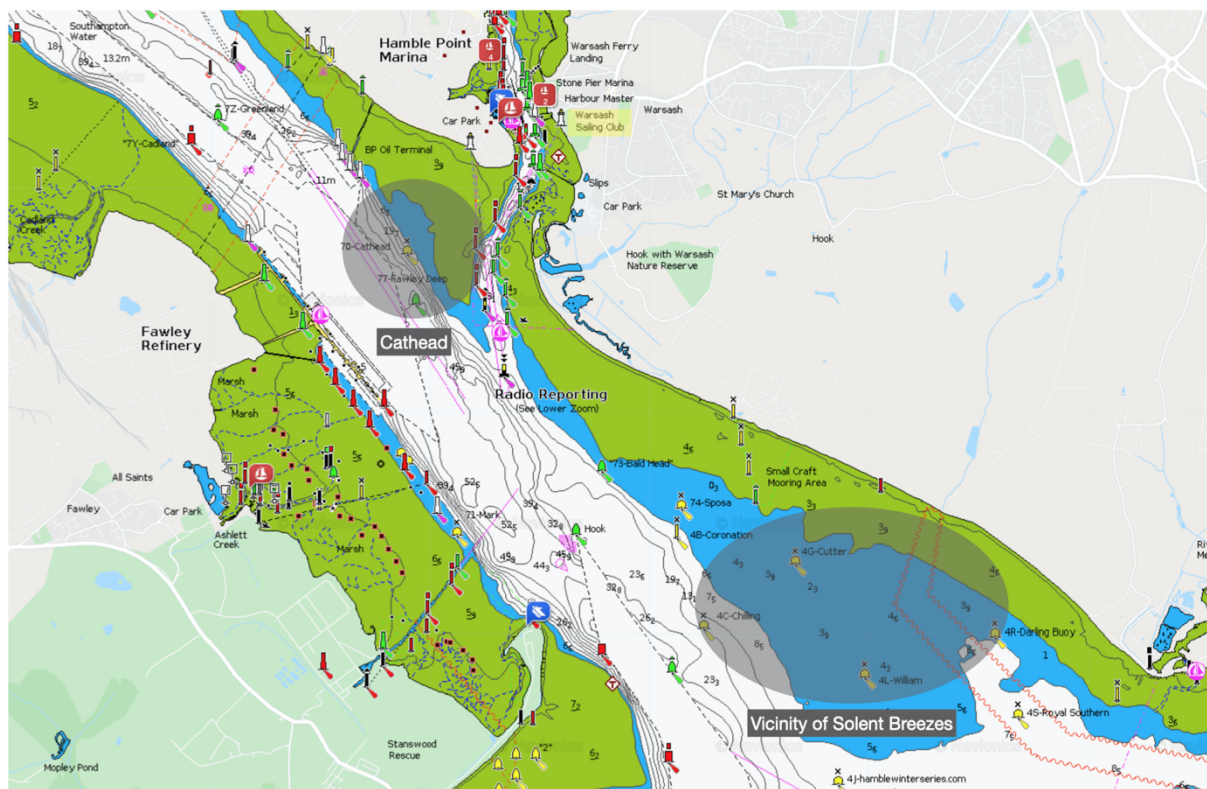
Warsash Sailing Club

Notice Of Race

Addendum 1 - Site Plan



Addendum 2 - Racing Area



Warsash Sailing Club

Shore House, Shore Road, Warsash, Southampton, SO31 9FS, UK

Tel: 01489 583575 Email: admin@warsashsc.org.uk Web: warsashsc.org.uk