

RS
200

RS
400

RS
600



WSC RS 200, 400 & 600 Open Joining Instructions 6th - 7th June 2026

Welcome to Warsash Sailing Club

We are delighted to welcome you to our club but before arrival, please read these joining instructions. If you have any questions or are unsure about anything on the day, please ask a member of the event team for assistance.

Why are the joining instructions important?

Warsash Sailing Club (WSC) operates in a unique location, and careful planning is required to ensure the safe and smooth running of the event:

- Based on the River Hamble, WSC is split between two clubhouses, with multiple slipways.
- Launching slipways are selected depending on the state of the tide.
- The slipway used at the start of the day will be different from the one you return to after sailing. Your trolleys will be moved for you.
- Strawberry Field (situated behind the club) is reserved for the use of storing dinghies and road trailers for the duration of the event (parking and camping are however not permitted for this event).
- Changing rooms are located at Lobster Quay. The main club house is a separate building called Shore House.
- Please register on Saturday morning in the main hall in Shore House, where you will receive your trolley tag and any food tickets you've booked.

This document includes:

1. Arrival information
2. Bar, catering and booking
3. Site plan
4. Parking
5. Dinghy park areas
6. Dinghy launching
7. Changing facilities
8. Accommodation

If you have any further questions, please contact WSC during office hours.

Email: admin@warsashsc.org.uk or Tel: 01489 583575

1. Arrival information



Address

- Warsash Sailing Club, Shore House, Shore Road, Warsash, Southampton, SO31 9FS.

Timings

- Boats can be dropped off and left in Strawberry Field from 16.00 – 21.00 on Friday 5th June. On Saturday 6th June Strawberry Field will be open from 07.30.

Directions

- Coming from the Brook Lane direction, follow Shore Road along the one way system to reach WSC.
- Friday evening arrivals
 - From the Rising Sun pub, you will be directed up the one-way past the main club house (Shore House) and right into Strawberry Field. This is the location of the boat park for the event.
 - The entrance / exit to Strawberry Field is shown in the photo below.



- Saturday morning arrivals
 - From the Rising Sun pub, you will be directed along the shorefront in front of the club, up through the Shore House dinghy park to the entrance of Strawberry Field. This is the location of the boat park for the event.
 - A one way system will be in effect, and there should be volunteers to help direct you.
 - Please be careful and considerate of pedestrians walking along the shore front.
- Marshalls at the entrance of Strawberry Field will direct you to the correct location to park your boat and trailer.
- The quick unhitching of trailers and moving of cars will help us ensure we do not end up with too much traffic blocking the one-way system. We very much rely on your assistance and patience whilst people arrive and unload.
- At all times you are requested to keep right to allow non-event vehicles to pass you in the one-way system.
- Thank you for your assistance and consideration whilst unloading.

2. Bar, catering and booking

The WSC bar and kitchen is based at Shore House. The bar will be open at the following times:

- Friday evening
- All day Saturday
- Sunday lunchtime

Catering will be available:

- Friday evening: hot food available, order on site.
- Breakfast: Saturday and Sunday mornings, should be pre-booked online via the entry page (<https://warsashsc.org.uk/open-meetings/rs200-rs400-rs600/rs200-rs400-rs600-event-food/>) by Tuesday 2nd June.
- Saturday evening BBQ: available by pre-booking online via the entry page by Tuesday 2nd June.
- Lunch: available Saturday and Sunday for non-sailors.

3. Site plan



4. Parking

- There will be no parking in Strawberry Field for this event.
- There are two public car parks very close to WSC. Both are pay and display and are regularly visited by keen wardens.
- Please be aware, the main car park has a height barrier, and the secondary car park has a 4 hour stay limit.
- There is also on-street parking on the following roads: Thornton Avenue, Crofton Way and Newtown Road. Please be considerate to residents.
- There is another public car park on Warsash Road, in front of the Co-Op.

5. Dinghy park areas

- Once on Strawberry Field, Marshalls and volunteers will be on hand to assist and direct you where boats and road trailers can be put.
- We are limited on space in Strawberry Field so please park boats and trailers with this in mind.

6. Dinghy launching

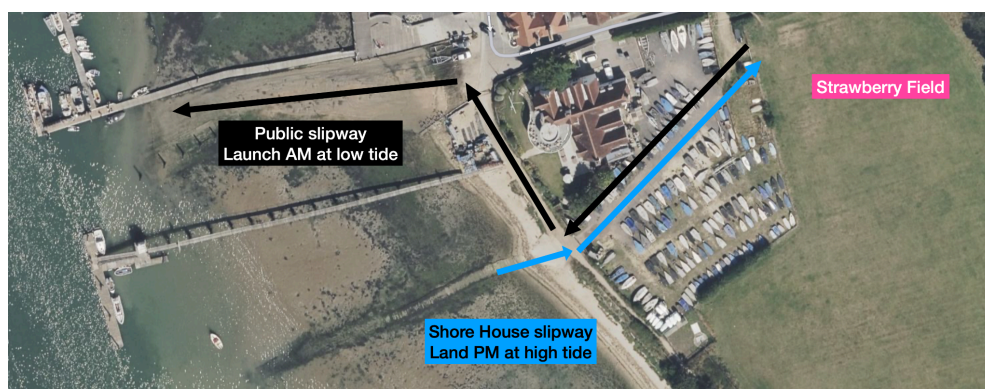
On both race days, the gates between Strawberry Field and WSC's Shore House dinghy park will be open to give everyone access to the launching areas providing the shortest route to the water.

Tallies

- Please ensure you tally out before you launch and tally in when you return ashore.
- The tally board will be located in front of Shore House in the morning and by the gate to the Shore House dinghy park when you return ashore.

Launching

- Given the tide times for the weekend, launching AM at low tide will take place from the public slipway, and landing PM at high tide on the Shore House slipway.
- The area around the Shore House slipway will be very muddy at low tide.
- Note when landing, the beach either side of the Shore House slipway can be used, but beware the slipway is raised and can be very slippery.



Hoses

- These are available in the Shore House dinghy park and can be used to wash boats and equipment after racing.

Trolleys

- There will be a team of volunteers to move trolleys from the morning launching area to the afternoon landing area if required.
- This team will also assist you, fetching trolleys as you arrive, so please ensure your provided trolley tag is clearly marked with your sail number.

Volunteers

- WSC team members will be assisting in all areas and available to guide and help.

7. Changing facilities

- The event changing and shower facility are housed in Lobster Quay, situated on the river side of Lobster Quay boat park.
- The classroom at this facility can be used as an overflow for bags/luggage as storage can be limited in the actual changing/shower rooms.
- We recommend not to leave valuables (phones, wallets, etc) in the changing rooms.

8. Accommodation

- For accommodation suggestions please visit the WSC website where you will also find information about the closest caravan and campervan facilities.
- Please be aware, the public car parks closest to the club do not permit overnight stays.
- Overnight parking in Strawberry Field will not be permitted.

<https://warsashsc.org.uk/local-accommodation/>